



PT D&C ENGINEERING COMPANY



Partner for
Integrated Power Business

Mitra Bisnis Usaha Energi Terpadu



Operational and Maintenance Excellence

Meraih Keunggulan melalui Hasil Kerja dan Pelayanan

VISION

Our vision is to be the most admired global energy company through the ability and to build partnership in power generation industry.

MISSION

Constantly providing advance international technology to serve customers, be Number One in Indonesia electric power business, for either construction and service industry

VALUES

Integrity, Diversity, Partnership, Dicipline, Safety

VISI

Menjadi Perusahaan Energi Dunia yang memberi warna tersendiri melalui kemampuan membangun kemitraan dalam industri Pembangkit Listrik.

MISI

Tetap konsisten dalam penyediaan teknologi modern dalam melayani bidang kelistrikan, serta menjadi perusahaan nomer satu dalam bidang Listrik, Konstruksi dan Industri Jasa di Indonesia

NILAI

Integrasi, Keragaman, Kemitraan, Disiplin, Keamanan, Standar Kinerja.

Table of Contents

- 1. Vision, Mission & Value
- 2. D&C Way Strategy
- 5. Our History
- 6. Our Management
- 8. Our Services
- 9. Our Facilities & Equipment
- 10. Experiences Millestone
- 11. Honor & Qualification
- 13. Our Improvement
- 14. Corporate Social Responsibility
- 15. Occupational Health and Safety
- 16. Subcontractor HSE Management Systems

D&C Way Strategy

Budaya Kerja Kami

Our Strategic Plan translates our vision into actions. It aligns and integrates our organization, inspires confidence, and differentiates us from the competition.

Rencana Strategis kami menerjemahkan visi kami menjadi tindakan. Ini sejalan dan mengintegrasikan organisasi kami, mengilhami kepercayaan diri, dan memiliki keunggulan dalam persaingan.

Operational and Maintenance Excellence (OME) Vision & Values

Our vision for OME directly supports our corporate vision to be the global energy company most admired for its people, partnership and performance. With respect to operational excellence, our vision is to be recognized and admired by industry and the communities in which we operate as world-class in safety, health, environment, reliability and efficiency.

OME Objectives

We will systematically manage OME in order to:

- Achieve an injury-free work place.
- Eliminate spills and environmental incidents.
- Identify and mitigate key environmental risks.
- Promote a healthy workplace and mitigate significant risks.
- Operate incident-free with industry-leading asset reliability.
- Maximize the efficient use of resources and assets.

The Tenets of OME are based on two key principles:

- Do it safely, or not at all
- There is always time to do it right

Keunggulan dalam Operasional dan Pemeliharaan (OME) dalam Visi & Nilai

Visi kami untuk OME langsung mendukung visi perusahaan kami untuk menjadi perusahaan energi global yang paling dikagumi karena kemitraan dan kinerjanya dengan senantiasa memperhatikan keselamatan, kesehatan, lingkungan, kehandalan dan efisiensi.

Tujuan OME

Kami akan mengelola OME secara sistimatis dalam rangka untuk:

- Mencapai tempat kerja bebas cedera
- Menghilangkan tumpahan dan insiden lingkungan.
- Mengidentifikasi dan mengurangi risiko lingkungan utama.
- Mempromosikan tempat kerja yang sehat dan mengurangi risiko yang signifikan.
- Mengoperasikan tanpa insiden dengan aset industri terkemuka yang handal.
- Maksimalkan penggunaan sumber daya dan aset yang efisien.

Prinsip OME didasarkan pada dua kunci utama:

- Lakukan dengan aman, atau tidak sama sekali
- Selalu ada waktu untuk melakukannya dengan benar

Zero, Zero

One-001 A call to Help remember our Goal of :

Zero Incidents, Zero Injuries, Number One in the Hearts and Minds of our Customers Operational and Maintenance. Discipline Every task, the right way every time.

Zero, Zero

Satu - 001 Panggilan untuk membantu mengingat tujuan kami :

Tanpa Kecelakaan, Tanpa Cedera

Adalah yang utama dibenak dan hati kami dalam setiap pelaksanaan kerja dan pemeliharaan, dengan cara disiplin pada setiap tugas dengan cara yang benar setiap saat.

Code of Conduct

This refers to the command of corporate philosophy, business organizations and the words and deeds of all the staff and activities to show the difference between an enterprise and other enterprises

1. The Ideological quality
2. The Vocational skills
3. The Organization and discipline
4. The Two leading
5. Management
6. Workers

Tata Kelola

Hal ini mengacu kepada garis filosofi perusahaan, organisasi dan perilaku seluruh staf perusahaan yang memperlihatkan kekuatan perusahaan kami dengan yang lain.

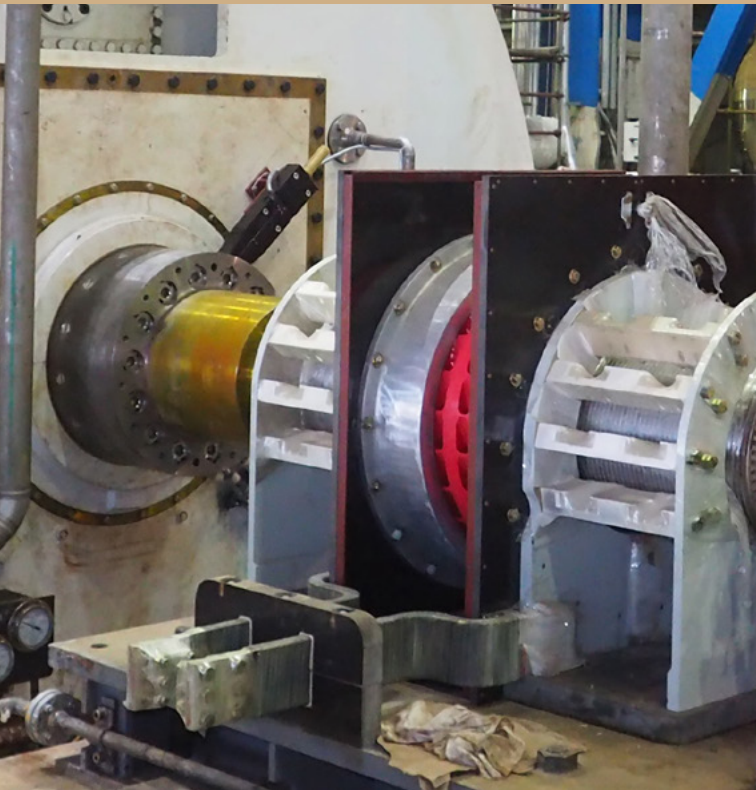
1. Kualitas Ideologis
2. Keterampilan Kejuruan
3. Organisasi dan disiplin
4. Kepemimpinan yang dinamis
5. Pengelolaan
6. Pekerja

Our Target :

1. Operate within design or environmental limits.
2. Operate in a safe and controlled condition.
3. Ensure safety devices are in place and functioning.
4. Follow safe work practices and procedures.
5. Meet or exceed customer's requirements.
6. Maintain integrity of dedicated systems.
7. Comply with all applicable rules and regulations.
8. Address abnormal conditions.
9. Follow written procedures for high risk or unusual situations.
10. Involve the right people in decisions that affect procedures and equipment.

Target Kami:

1. Beroperasi dalam koridor desain atau aspek lingkungan.
2. Beroperasi dalam kondisi aman dan terkendali.
3. Pastikan perangkat keselamatan berada pada tempatnya dan berfungsi.
4. Ikuti praktek kerja dan prosedur yang aman.
5. Memenuhi atau melampaui persyaratan pelanggan.
6. Menjaga integritas sistem yang berdedikasi.
7. Mematuhi semua peraturan dan peraturan yang berlaku.
8. Mengatasi kondisi yang tidak normal.
9. Ikuti prosedur tertulis untuk risiko tinggi atau situasi yang tidak biasa.
10. Libatkan orang yang tepat dalam keputusan yang mempengaruhi prosedur dan peralatan.





PT. D&C Engineering Company is a high-technology enterprise that has an advantage in terms of talent, scientific research and cultural atmosphere. It focuses on the electric power industry, involved in R&D, popularization and technical service of energy-saving and environment-friendly hi-tech products.

PT. D&C Engineering Company adalah perusahaan teknologi tinggi yang memiliki keunggulan dalam keahlian, penelitian ilmiah dan lingkungan kerja. Berfokus pada industri tenaga listrik, terlibat dalam Penelitian dan Pengembangan, mempopulerkan pelayanan teknis hemat energi dan teknologi tinggi yang ramah lingkungan.

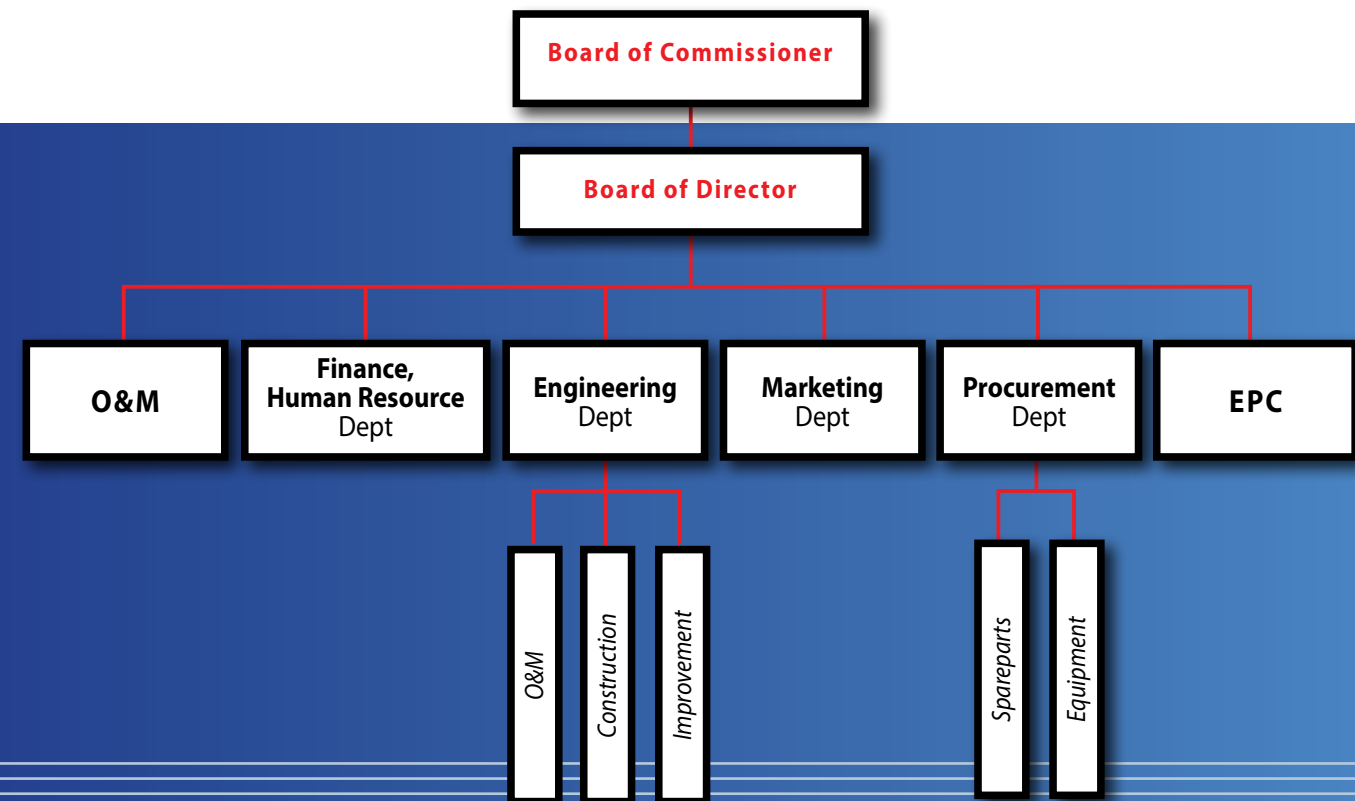


PT. D&C Engineering Company was incorporated on December 21st, 2007, having legal domicile in Jakarta, the 1st Indonesian joint venture, integrating power plant construction, overhaul, commissioning, operation, maintenance and improvement of work and service, with 3 main shareholders of :

- **PT. Sumbergas Sakti Prima (SSP, Jakarta, Indonesia)**
- **Zhejiang Huaye Power Engineering Co. Ltd (HYPE, Zhejiang, China)**
- **Garland Investment Limited (Garland, Hong Kong, China).**

PT. D&C Engineering Company didirikan pada 21 Desember 2007, berkedudukan hukum di Jakarta, perusahaan patungan pertama di Indonesia, mengintegrasikan pembangunan pembangkit listrik, perbaikan, komisioning, operasi, pemeliharaan dan peningkatan kerja dan pelayanan, dengan 3 pemegang saham utama :

- **PT. Sumbergas Sakti Prima (SSP, Jakarta, Indonesia)**
- **Zhejiang Huaye Power Engineering Co. Ltd (HYPE, Zhejiang, China)**
- **Garland Investment Limited (Garland, Hong Kong, China).**



Achievement of self

Achievement of self is mainly reflected in two aspects :

- The enterprise to market-oriented, scientific management, competition and law-abiding business, to realize their business objectives
- People-oriented enterprises, and actively work for employees to create learning opportunities, so that workers are thorough.

The achievements of both self-reflecting the essential requirements of the company exist, but also reflecting the company management philosophy.

Pencapaian Perusahaan

Prestasi diri terutama tercermin dalam dua aspek:

- Mewujudkan bisnis usaha yang berorientasi pasar, manajemen ilmiah, kompetisi dan taat hukum
- Berorientasi kepada manusia, yang secara aktif memberikan kesempatan belajar, sehingga menjadi pekerja yang tangguh.

Kedua aspek tersebut merupakan persyaratan baku yang mencerminkan filosofi manajemen Perusahaan.



Definition of the Spirit of Enterprise

Kekuatan
Sebuah Usaha

- Diligent in thinking
 - The courage to practice
 - Willing to sacrifice
 - Innovative
- Berpikir Kritis
 - Keberanian untuk mengembangkan diri
 - Mampu berkorban
 - Mampu menciptakan hal baru

Training Centre & Simulation

Our goal is to build a standardized, scientific, effective and practical Simulation Training Centre, and gradually realize the overall process for simulation and training from the junior phase to senior phase, from part to overall, from single training to full training.

Based on the practice, focus on complex and multi-function training for management personnel, focus on the integrated development for personnel emphasized full-skill concept.

Pusat Pelatihan & Simulasi

Sebagai Pusat Pelatihan Simulasi yang mengacu kepada standar ilmiah efektif dan praktis. Secara bertahap memberikan tingkat pendidikan dari fase junior sampai beberapa jenjang senior disesuaikan kebutuhannya.

Pendidikan lebih diarahkan kepada pendidikan yang kompleks, multi fungsi dan terintegrasi.

Our Strategy :

- Increase percentage of Local Team
- Dual-Language communication
- Continuous Technical Training
- Indonesian Graduates from various reputable universities in Indonesia.

Strategi Kami:

- Meningkatkan persentase Tim Lokal
- Dual-Bahasa komunikasi
- Pelatihan Teknis Terus-menerus
- Lulusan Indonesia dari universitas terkemuka di Indonesia.

Our Services

Pelayanan Kami

1. Engineering Procurement and Construction Service

- Coal Fired Steam Power Plant
- Gas Turbine Power Plant
- Co-generation Power Plant
- Renewable Energy
- Other Clean Energy Power Plant

2. Power Plant Service and Improvement

- Experience and profesional Chinese and local team for : O&M service and Overhaul Service
- Tiny-oil Ignition improvement, save 85% oil for both ignition & low load combustion consumption
- Environment Protection Improvement; Desulphurization and Denitration

3. Electricity Consultancy Service

- Special Electrical Consultancy Service in the Power Industry
- Our Power System Analysis, the expected performance of electrical generation and distribution systems can make you modeled in both dynamic and steady states

4. Electricity Transmission Service

- Extra High Voltage transmission line 500 kV
- High Voltage transmission line 275 kV, 150 kV
- Medium Voltage transmission line 70 kV
- Low Voltage distribution system 380V and 220V



Our Facilities & Equipment

Fasilitas Penunjang yang kami miliki

400t Crawler Crane

50t Crawler Crane

50t Tower Crane

50t & 25 t Mobile Crane

Forklift, Bulldozer, Excavator,

Dump-truck, Hundreds

Welding Machines, and other

equipment that can carry out

various O&M and

Construction Project.



Type of Services	Key Performance Indicators		
Overhaul Services	Heat Consumption	Oil Consumption	Make Up Water
	Aux. Power	Load @ MCR	Planning
O & M Services	Coal Consumption	Self Consumption	AFa
	EAF	NPHR	
EPC Services	Earn Value	Weight Value	Progress %
Tiny-Oil Instalation	Oil Saving		
Procurement	Fast	Price	OM



Experiences
Milestone

Pengalaman Proyek

Honor &
Qualification

Penghargaan dan
Sertifikasi

No	Project Description	Year
1.	Overhaul for 2x300 MW Cilacap CFSPP Unit 1 (including tiny-oil ignition installation and commissioning)	2008
2.	Operation and Maintenance Project for 2x300 MW Cilacap CFSPP Unit 1 and Unit 2	Since 2008
3.	Overhaul for 2x300 MW Cilacap CFSPP Unit 2 (including tiny-oil ignition installation and commissioning)	2009
4.	Overhaul Service 1x150 MW Palembang Timur GFCC Power Plant	2010
5.	2x300 MW Cilacap CFSPP Unit 1 Minor Overhaul	2010
6.	2x300 MW Cilacap CFSPP Unit 2 Minor Overhaul	2010
7.	2x300 MW Cilacap CFSPP Unit 1 Minor Overhaul	2011
8.	Tiny Oil Installation and Commissioning for 2x300 MW Labuan CFSPP Unit 1 and Unit 2	2011
9.	Construction & Commissioning Works for 2x125 MW Jeneponto CFSPP Project	2012
10.	Operation and Maintenance Project for 2x125 MW Jeneponto CFSPP Unit 1 and Unit 2	Since 2012
11.	Tiny Oil Installation and Commissioning for 3x300 MW Lontar CFSPP Unit 1, Unit 2 and Unit 3	2013
12.	Tiny Oil Installation and Commissioning for 1x600 MW Paiton CFSPP Unit 1	2015
13.	Construction & Commissioning Works for 1x600 MW Cilacap Expansion 1 CFSPP Project	2016
14.	Operation and Maintenance Project for 1x600 MW Cilacap Expansion CFSPP	Since 2016
15.	Tiny Oil Installation and Commissioning for 3x300 MW Indramayu CFSPP Unit 1, Unit 2 and Unit 3	2017
16.	Construction & Commissioning Works for 2x135 MW Jeneponto Expansion CFSPP Project	2017
17.	Operation and Maintenance Project for 2x135 MW Jeneponto Expansion CFSPP	Since 2017
18.	Construction & Commissioning Works for 2x100 MW Kaltim-2 CFSPP	2019
19.	Construction & Commissioning Works for 1x1,000 MW Cilacap expansion 2 CFSPP	2019
20.	Operation and Maintenance Project for 1x1,000 MW Cilacap CFSPP	Since 2019
21.	Construction & Commissioning Works for 2x150 MW Sumbagsel-1 CFSPP	Ongoing



Qualifications

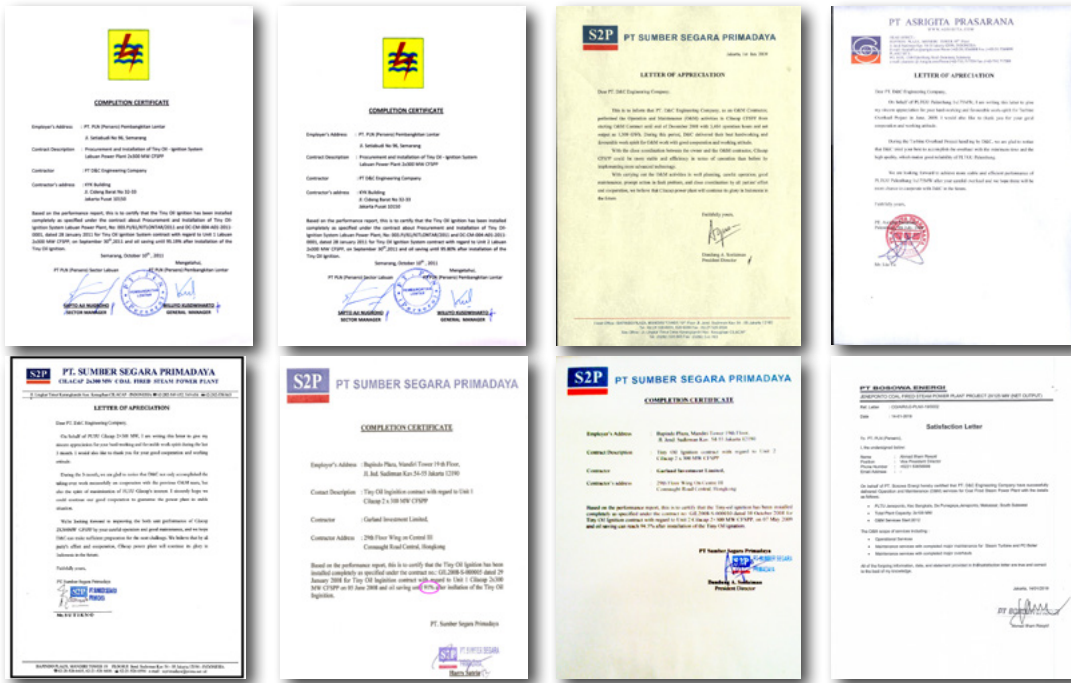
D&C holds Grade 7 general contractors qualifications in elcetric power construction, Licenses for; electric power facilities instalation and commissioning, operation and maintenance, pressure equipment instalation and pressurized pipelines (GA1, GB, GC1).



Kualifikasi

D&C memegang kualifikasi kontraktor umum Peringkat 7 dalam pembangunan tenaga listrik. Saat ini telah memiliki sertifikat untuk; Fasilitas instalasi dan Komisioning listrik, Operasi dan Pemeliharaan Instalasi peralatan dan pipa bertekanan (GA1, GB, GC1).

Certificate JAS-ANZ ISO 9001: 2015; Certificate JAS-ANZ ISO 14001: 2015; Certificate JAS-ANZ OHSAS 18001: 2007, for EPC & O&M



Completion Certificate :

- Installation Tiny Oil Ignition System at Cilacap 2x300 MW CFSPP
- Installation Tiny Oil Ignition System at Labuan 2x300 MW CFSPP
- Installation Tiny Oil Ignition System at Lontar 3x300 MW CFSPP
- Installation Tiny Oil Ignition System at Paiton 1x600 MW CFSPP
- Installation Tiny Oil Ignition System at Indramayu 3x300 MW CFSPP

Letter of Appreciation :

- O&M success at Cilacap CFSPP
- O&M success at Jeneponto CFSPP
- Overhaul Project at Palembang Timur GFCCPP
- O&M activities at Cilacap CFSPP.

Our Improvement

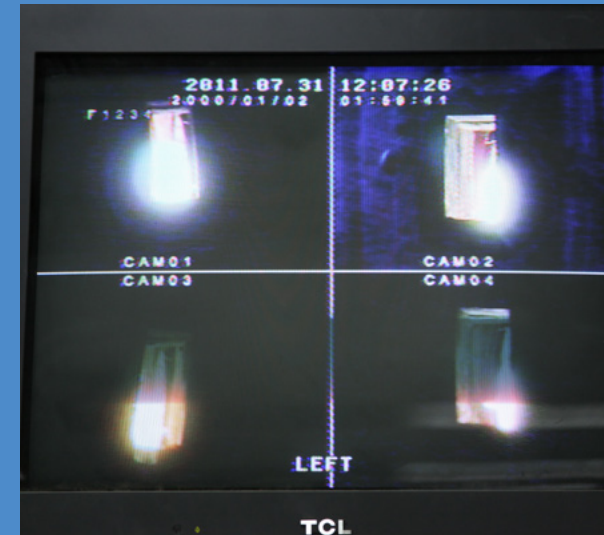
Pengembangan Produk Kami



Flame Checking



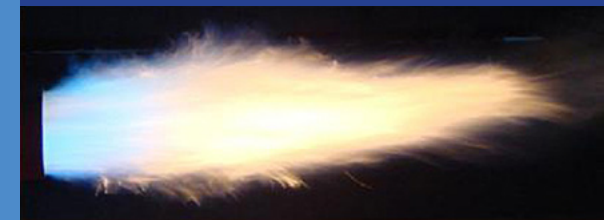
Burner Lifting



Flame of Original Burner



Flame of Tiny-Oil Burner



Tiny-Oil Ignition System brings advantages as follows:

1. Flame with high temperature can easily ignite all kinds of coal
2. Simple system with few fault
3. Only 15-25 days for installation and no civil work. Can be relized both in construction and overhaul.
4. Few maintenance work (No repair or fault occurred in on year in Cilacap)
5. Mature technology to ensure stable operation
6. ESP can be put into operation at the very beginning of unit start-up; well protect environment
7. Large benefit with little investment
8. Automatic control system and easy for training

Tiny-oil may be installed for PC Boiler with minimum capacity of 25MW.

Tiny-oil Ignition System memberikan beberapa keuntungan, seperti :

1. Menghasilkan panas yang tinggi sehingga mampu membakar berbagai jenis batu bara
2. Sistem yang sederhana dengan efisiensi yang tinggi
3. Hanya 15-25 hari pemasangan tanpa pekerjaan sipil. Dapat dikerjakan sekaligus pada saat konstruksi dan overhaul
4. Sedikit pemeliharaan (Tidak ada kerusakan selama 1 tahun di PLTU Cilacap)
5. Teknologi yag tinggi menjamin kestabilan operasi
6. ESP dapat digunakan pada pemasangan unit Start-up, untuk memberikan pengaruh yang baik untuk lingkungan
7. Keuntungan yang besar dengan biaya kecil
8. Menggunakan system control otomatis dan mudah dipelajari

Tiny-oil dapat digunakan pada PC Boiler dengan minimum kapasitas pembangkit 25 MW.

Corporate Social Responsibility

Tanggung Jawab Sosial
Perusahaan

An enterprise can achieve its business objectives had reached only the higher realm of the achievement of self, and drive toward prosperity of society as whole through the achievements of self and community developments is the business of the pursuit of the highest state.

Perusahaan dapat mencapai tujuan usaha, jika mampu memberikan kesejahteraan bagi masyarakat dan lingkungannya, melalui berbagai usaha peningkatan dan pengembangan diri manusia untuk meningkatkan kehidupan yang lebih baik.



Health Care

Occupational Health and Safety

Kesehatan dan
Keselamatan Kerja

Occupational Health and Safety Commitment :

To increase safety training, develop a comprehensive health and safety policy for manual workers, including contract labor and to seek ISO 9001, ISO 14001 and OHSAS 18001 certification.

Action Achieved
QHSE certification was achieved for Operation and Maintenance since June 2010 and for Engineering, Procurement and construction since October 2011.

Komitmen Kami dalam Keselamatan Kerja dan Kesehatan Kerja

Untuk meningkatkan pelatihan keselamatan dan kesehatan yang komprehensif maka perusahaan senantiasa mengacu kepada standar disiplin kerja yang baku dengan mengupayakan Sertifikat ISO 9001, ISO 14001 dan OHSAS 18001.

Langkah yang telah dicapai
Antara lain dengan mendapatkan Sertifikasi untuk Operasi dan Pemeliharaan sejak bulan Juni 2010, serta Sertifikat Pengadaan, Rekayasa dan Konstruksi sejak bulan Oktober 2011.



HSE Management Systems

Sistem Menejemen HSE

The program outlined before you sets out our minimum HSE expectations for supplying our operations and maintenance.

PT. D&C Engineering Company want to stress that it is subcontractor’s responsibility as our approved supplier to understand and meet all the expectations outlined here, as well as all other relevant legal, Governmental and contractual guidelines.

Uraian minimum Program HSE senantiasa diterapkan dalam setiap pelaksanaan kerja dan Pemeliharaan.

PT D&C Engineering Company ingin menekankan Tanggung jawab Sub-kontraktor sebagai pemasok yang disetujui untuk selalu memahami dan memenuhi semua harapan serta semua Pedoman Hukum Pemerintah dan Kontrak Kerja dapat sejalan.



Objective :

The objective of the HSEMS process is to develop and manage a sustainable, fit-for-purpose process that will allow D&C organizations to continually improve contractor HSE performance through the use of risk-based procedures that address the following areas:

- Leadership accountability for employees and contractors
- Contractor engagement
- Contractor HSE/OME processes: Planning, Qualification and selection, Pre-job review activities, Work in progress and Performance evaluation

Tujuan Sistem ini :

Adalah agar Perusahaan kami dapat terus mengembangkan hubungan kinerja yang terbaik dengan para kontraktor HSE melalui pelaksanaan berbasis yang menangani bidang-bidang berikut :

- Akuntabilitas kepemimpinan bagi karyawan dan kontraktor
- Hubungan dengan Kontraktor
- Proses HSE/OME untuk kontraktor: Perencanaan, Kualifikasi dan Seleksi, Tinjauan sebelum pekerjaan dimulai, Pelaksanaan pekerjaan dan Evaluasi Pelaksanaan pekerjaan.

The Future

D&C Engineering Company is committed to comprehensively implement our management system and continually improve its effectiveness and efficiency by realizing continual improvement programs.

The Company is preparing for the development of EPC Petro-chemical Project, Transmission Line Project, Geothermal power plant, clean energy project, Renewable Energy project and industrial estate project.

Masa Depan

D&C Engineering Company berkomitmen untuk secara komprehensif menerapkan sistem manajemen kami dan terus-menerus meningkatkan efektivitas dan efisiensi dengan mewujudkan program perbaikan berkesinambungan.

Perusahaan sedang mempersiapkan untuk pengembangan EPC Proyek Petro-kimia, Proyek Transmisi, Pembangkit listrik panas bumi, energi bersih, energi baru terbarukan dan kawasan industri.





PT D&C ENGINEERING COMPANY

KYK BUILDING
JI. CIDENG BARAT NO. 32-33
CIDENG - GAMBIR
JAKARTA PUSAT 10150
TEL : + 62 21 63858999
FAX : + 62 21 63860823
WEB : www.dcengineeringindonesia.com

